

Wood Species

Wood has its own natural characteristics and materials may vary from product samples and printed materials. We cannot warrant against natural variations or the differences between the color grain and appearance of product samples.



CURLY MAPLE
Janka: 1450



MAPLE
Janka: 1450



ASH
Janka: 1320



POPLAR
Janka: 540



YELLOWHEART
Janka: 1820



HICKORY
Janka: 1820



QTR. RED OAK
Janka: 1290



PLN. RED OAK
Janka: 1290



QTR. WHITE OAK
Janka: 1360



PLN. WHITE OAK
Janka: 1360



AMERICAN CHERRY
Janka: 950



GEN. MAHOGANY
Janka: 800



ZEBRAWOOD
Janka: 1575



TIGERWOOD
Janka: 2620



SAPELE
Janka: 1439



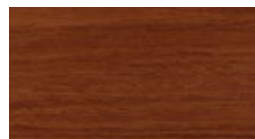
BRAZILIAN CHERRY
Janka: 2350



PADAUK
Janka: 1725



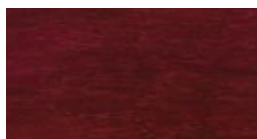
CUMARU
Janka: 3540



SANTOS MAHOGANY
Janka: 2200



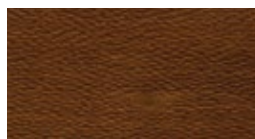
BLOODWOOD
Janka: 2900



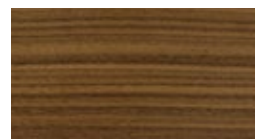
PURPLEHEART
Janka: 2090



SIPO
Janka: 1260



LEOPARDWOOD
Janka: 840



QTR. AMER. WALNUT
Janka: 1010



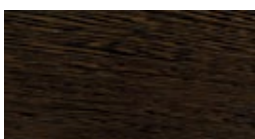
PLN. AMER. WALNUT
Janka: 1010



IPE
Janka: 3060



PERUVIAN WALNUT
Janka: 960



WENGE
Janka: 1630



JANKA WOOD HARDNESS RATING

The Janka hardness test measures the ability of a wood species to withstand denting and wear. The higher the number, the greater the required force. It also indicates how hard or easy a species is to saw or nail.